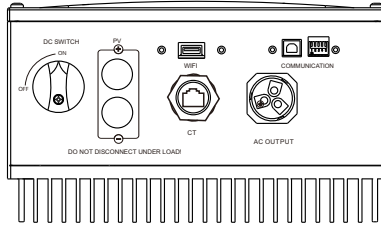


# External CT quick installation manual

## 1.Information

This manual is only applicable to PH5000 PV grid inverter load matching external CT installation

## 2.Connector

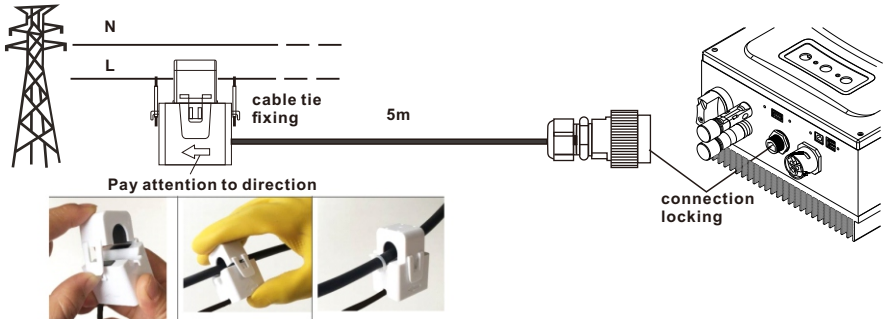


### Note:

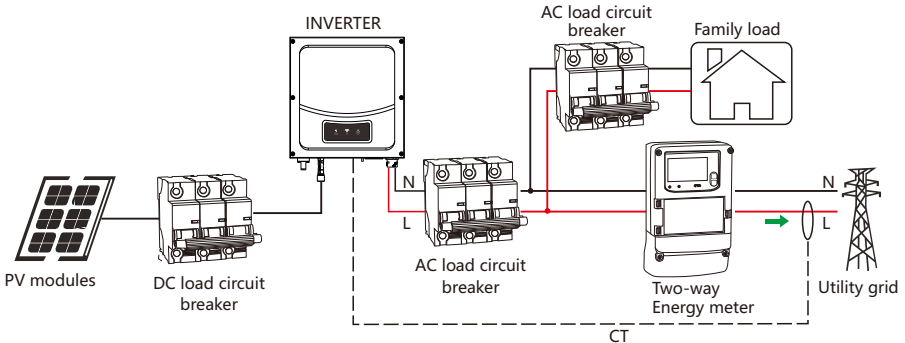
The Inverters of PH50-3600M-6000M have two PV inputs, PH50-2500-3000 only on PV input

connector	description	function
PV	DC input to photovoltaic panel	Energy input
CT	Connected load matching CT	Matching household load
WiFi	Connect to WiFi	Upload data, real-time monitoring of computer or mobile phone
AC OUTPUT	AC output connected to the grid	Energy output
COMMUNICATION	Connect to a computer using USB	PC communication

## 3.CT connection



## 4.We recommend electrical connection as below



**Note:** Only for inverters with load matching functions, General PV grid inverter electrical installation diagram, please refer to the user manual.

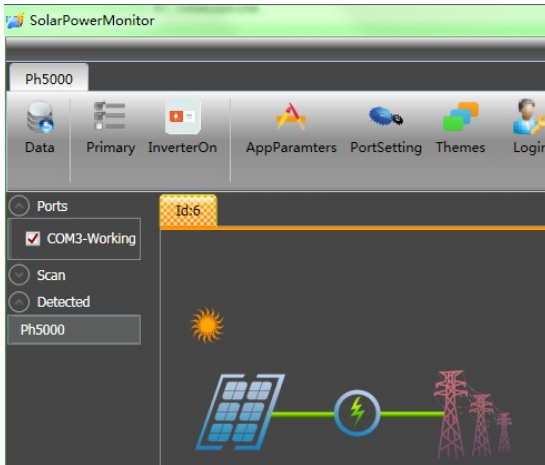
## 5. Open the function

### Option 1/Via Solar Power Monitor

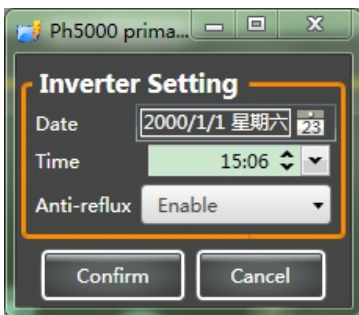
①. Use the CD that comes with the machine to install 'Solar Power Monitor' and 'CP210X\_VCP\_Win7\_8.exe'.

File Name	Size	Modified
readme.txt	208 B	2018-09-19 14:01:03
SolarPowerMonitor.exe	63.6 MB	2018-09-28 09:10:23
CP210x_VCP_Win7_8.exe	5.2 MB	2009-10-25 16:59:18
CH341SER.EXE	237.6 KB	2017-04-07 11:18:50

②. Connect the PH5000 to the computer with a USB cable, then turn on 'Solar Power Monitor'



③. Click 'Primary', Set the 'Anti-reflux' to Enable or Disable

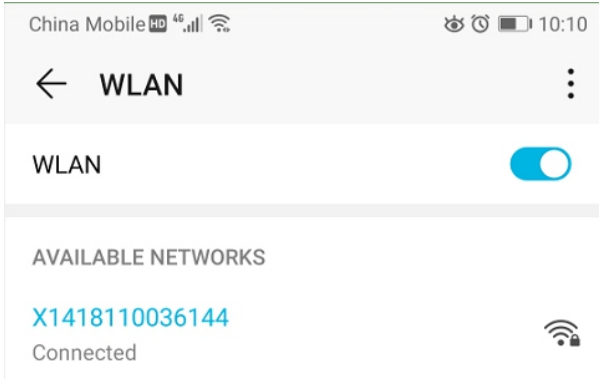


## Option2/via APP

①.Install SmartClient

Chinese customers download the app through Eybong's official website; other customers using IOS system and Android system search 'SmartClient' through 'APP store' and 'Google play' respectively.

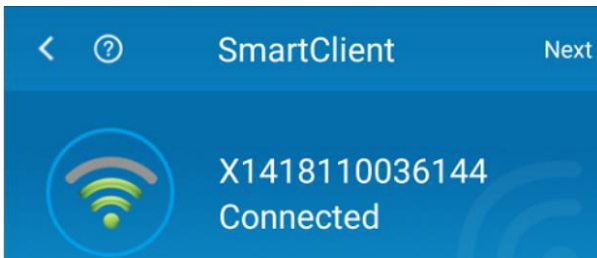
②.Turn on WIFI ,Connect WiFi - Plug (the name of the WiFi is the PN number of WiFi-Plug) (password : 12345678)



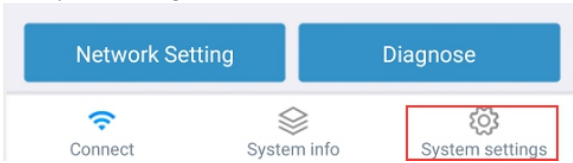
③.Run APP,and press 'Wi-Fi Config'.



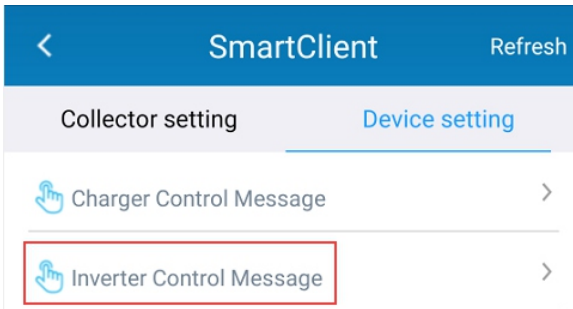
④.The normal connection status of WiFi-Plug is as follows.



⑥. Click 'System settings'.



⑥. Then press Device setting (if no data is displayed, please click 'refresh'), choose the 'Inverter Control Message'.



⑦. Finally, slide down to find the 'Anti-reflux Enable'; choose to turn the function on or off.

## Anti-reflux Enable

---

disable

---

enable

Note: 'enable' indicates that the function is turned on; 'disable' indicates that the function is turned off.