

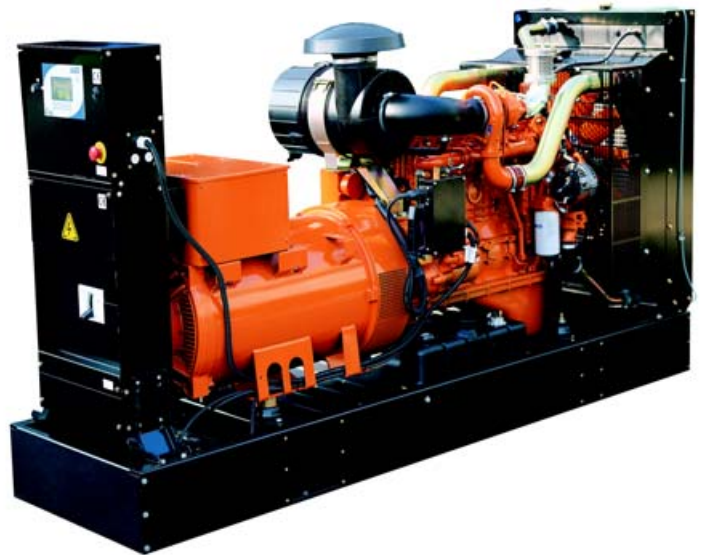
# GENERATING SET

# GE NEF 200E

## NEF

The Iveco Motors Diesel generating sets of the NEF family cover a power range from 30 to 220 kVA.

The product catalog includes open and soundproofed units for standard applications and rental, coupled to electronic control systems for manual and automatic control panels, for paralleling or other special systems produced according to the specific requirements of the customer. European 2002/88/EC directive is fully satisfied.



## PERFORMANCES

RATINGS <sup>1)</sup>	50 Hz		60 Hz	
	kVA	kWe <sup>2)</sup>	kVA	kWe <sup>2)</sup>
<b>PRIME</b>	<b>200</b>	<b>160</b>	<b>225</b>	<b>180</b>
<b>STAND-BY</b>	<b>220</b>	<b>176</b>	<b>248</b>	<b>198</b>

1) Ratings in accordance with ISO 8528 - The nominal power are available after 50 hours running with  $\pm 3\%$  tolerance. The indicated power may change in function of the utilized alternator. For duty at temperature over 40°C and/or altitude over 1000 meters must be considered a power derating factor. Contact the Iveco Motors sales organization.

2) Power factor 0.8.

### PRIME POWER

The Prime Power is the maximum power available with varying loads for an unlimited number of hours. The average power output during a 24 h period of operation must not exceed 80% of the declared prime power between the prescribed maintenance intervals and at standard environmental conditions. A 10% overload is permissible for 1 hour every 12 hours of operation.

### STAND-BY POWER

This is the maximum power available for a period of 500 hours/year with a mean load factor of 90% of the declared stand-by power. No kind of overload is permissible for this use.

### CONTINUOUS POWER

Contact the Iveco Motors sales organization.

## TECHNICAL DATA

Engine model	NEF60 TE2 - Common Rail	Frequency	50 Hz	60 Hz
Nb of cylinders	6, in line	Fuel consumption at :		
Total displacement	liters 5.9	100% load	l/h (g/kWh) 42.4 (202.9)	48.0 (206.1)
Aspiration	turbocharged aftercooled	80% load	l/h (g/kWh) 33.8 (202.0)	38.9 (208.9)
Cooling system	liquid (water + 50% Paraflu11)	50% load	l/h (g/kWh) 20.5 (196.1)	24.2 (207.9)
Lube oil consumption	< 0,1% of fuel consumption	Available voltages :	consult the documentation of the alternator.	
Genset dimensions (L x W x H)	mm 2800 x 780 x 1423	Dry weight with standard accessories	kg	~ 1570
		(may change in function of the alternator)		

**IVECO  
MOTORS**

**FPT**  
POWERTRAIN TECHNOLOGIES

## STANDARD CONFIGURATION

### 1. ENGINE DRIVE

IVECO MOTORS heavy duty diesel engine.  
Performances in accordance with ISO 8528, G3 class.

### 2. COOLING SYSTEM

Radiator and pusher fan dimensioned for tropical climates. The radiator is mounted on the base frame to avoid vibrations coming from the engine and is equipped with adequate security protection guards.

### 3. FILTRATION SYSTEM

The engine is equipped with: dry air filter complete of security element, cartridge fuel filters with water separator and oil filter.  
All filters have replaceable cartridges.

### 4. EXHAUST SYSTEM

Industrial application exhaust silencers are supplied on request.

### 5. ELECTRICAL SYSTEM

12 Volt system with battery charging alternator. Starter motor. High performance maintenance free lead acid battery (on request). Battery rack mounted on the generating set base frame.

### 6. ALTERNATOR

Single bearing synchronous brushless alternator, four poles, mechanical protection degree IP21 and H class insulation. Tropical climates impregnation; on request, humid and corrosive climates treatment. All alternators are equipped with electronic voltage regulator and meet the following standards : IEC34, CEI2-3, BS4999-5000, VDE0530, EN60034-1, NF51-100, CSA C22-2, OVE M10, NEMA MG1-22 .

### 7. MOUNTING ARRANGEMENT

#### 7.1 Base Frame

The complete generating set is mounted on a modern design and high quality steel fabricated base frame. In the catch all base frame are located the fuel tank and the batteries. Anti vibration pads are fitted between engine-alternator and base frame ensuring complete vibration isolation of rotating assemblies.

#### 7.2 Coupling

Engine and alternator are directly coupled.

### 8. FUEL SYSTEM

Thermoplastic fuel tank with a total capacity of 180 liters is provided on the base frame. The fuel tank is equipped with a visual fuel level indicator. Oversized fuel tanks and special certified fuel tanks with automatic refill are available on request.

### 9. CONTROL PANEL

Manual and Automatic control panels are available in different configurations.

### 10. OPTIONS

Generating set can be supplied with different options to meet the specific requirements of the customer .

### 11. DOCUMENTATION

A full set of operation and maintenance manuals are provided with each unit.

### 12. FACTORY TESTS

Generating set is subject to a strict load test before delivery. A test certificate can be provided on request.

### 13. QUALITY STANDARDS

Iveco Motors gensets meet the following requirements :  
89/336/CEE as amended by 92/31/CEE and 93/68/CEE;  
73/23/CEE as amended by 93/68/CEE;  
98/37/CE as amended by 98/79/CE;  
2002/88/CE.

**IVECO and 2HE are fully accredited ISO 9001.**

### 14. WARRANTY

Generating set is guaranteed for a period of 12 months from the start up date or 18 months from date of shipment whichever occurs earlier. Warranty extensions are available on request and forecast coverages respectively up to 24 and 30 months.

#### Iveco Motors - FPT

Via Puglia, 15 - 10156 Torino IT  
Tel. +39 (011) 0076245 - Fax +39 (011) 0076275

#### Iveco Motors - FPT

V.le dell'Industria, 15/17- 20010 Pregnana Mil.se Milano IT  
Tel. +39 (02) 935101 - Fax +39 (02) 93590029

www.ivecomotors.com

#### 2H Energy

Z.I. de Babeuf - Saint Leonard - 76400 Fécamp - FR  
Tel. +33 (0) 235106800 - Fax +33 (0) 235106810

Local distributor

**FENK**

J.B.Alberdi 7138 - Cap.Fed. - Argentina  
Tel: +54 11 4687-0000